

KRONOS

Weighing Indicator &
High-Speed Transmitter



SENSOCAR
We put the heart in weighing

Compact high-speed indicator

High-speed weight indicator for industrial environments in static and dynamic weighing.

Its **SMALL SIZE**, and the possibility of PANEL or DIN-RAIL mounting, allow to maximize the space in the installations.

Different transmission **CONNECTIVITY** options to connect to remote devices such as PCs, PLCs, repeaters, etc.

Adapt the equipment to your needs. **CUSTOMIZE** the configuration of limits, pass/fail and dosing with integrated applications.



TWO FORMATS

DIN RAIL



References: KRONOS, KRONOS-D.

 Dimensions: 160x37x79

PANELABLE

(Double display)



References: KRONOS, KRONOS-D Sizes: 160x37x79.

 Dimensions: 171x41x90

Technical Specifications

- **Power Supply:** 9V to 28V DC
- **Temperature Range:** -10°C to 40°C
- **IP Protection:** IP40
- **Interface:** 6-digit LED and 5 keys
- **Power Cell:** 5V DC
- **Internal Resolution:** ADC 24bits, 16,700,000 internal counts
- **Measurement Frequency:** Up to 1,000 measurements per second
- **Transmission Frequency:** Up to 500 averages per second

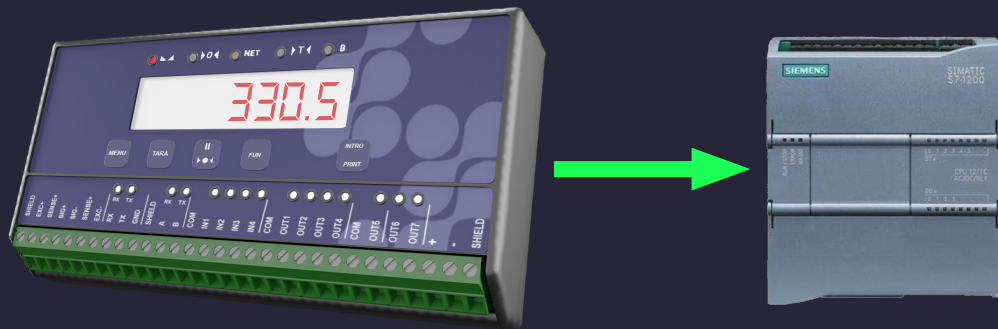
* Both formats available in versions for analog load cells and digital load cells 485 with the possibility of supplying the digital load cells with a source external to the equipment

Communications

- x1 RS232
- x1 RS485
- x1 USB Device (Type C)
- Optional Ethernet
- Optional Profibus DP-V0

It includes **more than 50 weighing protocols** that can be used through the different communication ports, among them:

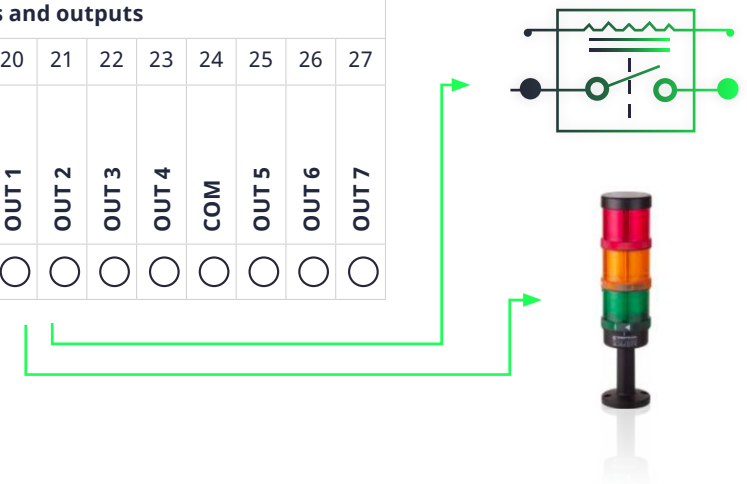
Modbus RTU, ASCII and TCP: universal standard protocol to read system weight and/or modify indicator parameters remotely (PLC or PC application).



Inputs and outputs

- **7 digital outputs**
- **4 optoisolated digital inputs**
- **Optional, 1 0-10V/4-20mA analog output** with galvanic isolation (in this case only 4 digital outputs will be available)

Inputs and outputs													
14	15	16	17	18	19	20	21	22	23	24	25	26	27
COM	IN 1	IN 2	IN 3	IN 4	COM	OUT 1	OUT 2	OUT 3	OUT 4	COM	OUT 5	OUT 6	OUT 7
○	○	○	○	○	○	○	○	○	○	○	○	○	○



It has a LED status indicator for both digital inputs and outputs, as well as for communications.

Models and options

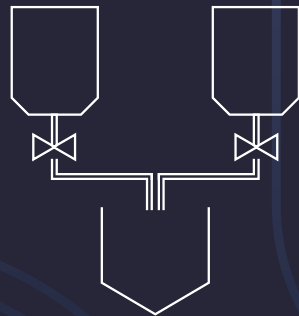
	Load cell	Display Keypad	Communications Ports	Digital Inputs	Digital Outputs	Output Analog (0-10v/4-20mA)	Ethernet	Profibus
MODELS								
KRONOS KRONOS/P	Analogic	✓	x1 RS232 x1 RS485 x1 USB C	4	7			
KRONOS-D KRONOS/P-D	Digital 485	✓	x1 RS232 x1 RS485 x1 USB C	4	7			
ADDITIONAL (Only 1 combination is possible)								
AD_KR/AO				4	4	✓		
AD_KR/ETH				4	7		✓	
AD_KR/AO + AD_KR/ETH				4	4	✓	✓	
AD_KR / PROFIBUS				4	7			✓

SENSOLADDER

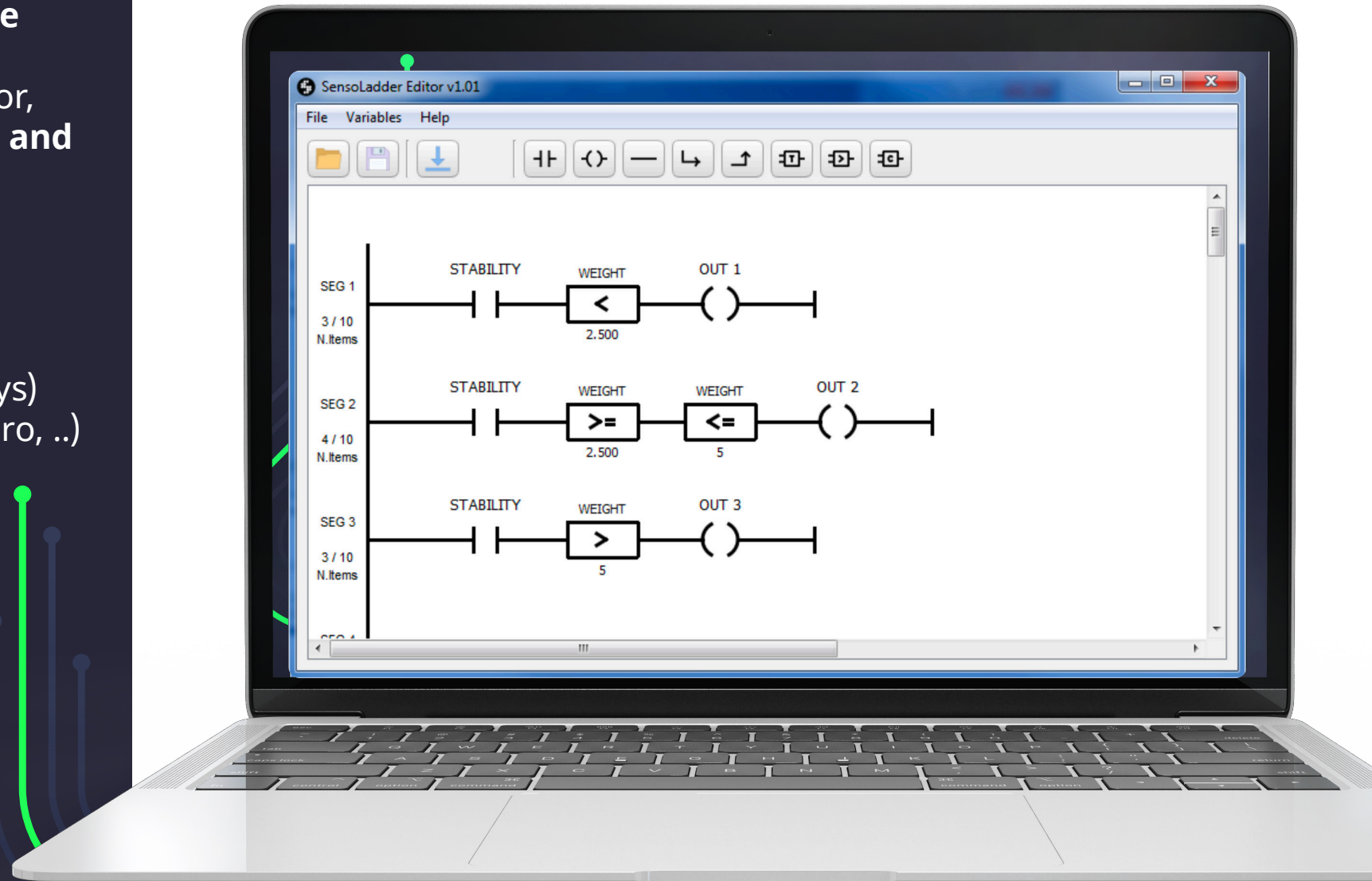
Design your dosages **according to the needs** of the installation, open valves according to the weight of the indicator, add delays necessary for your system **and much more!**

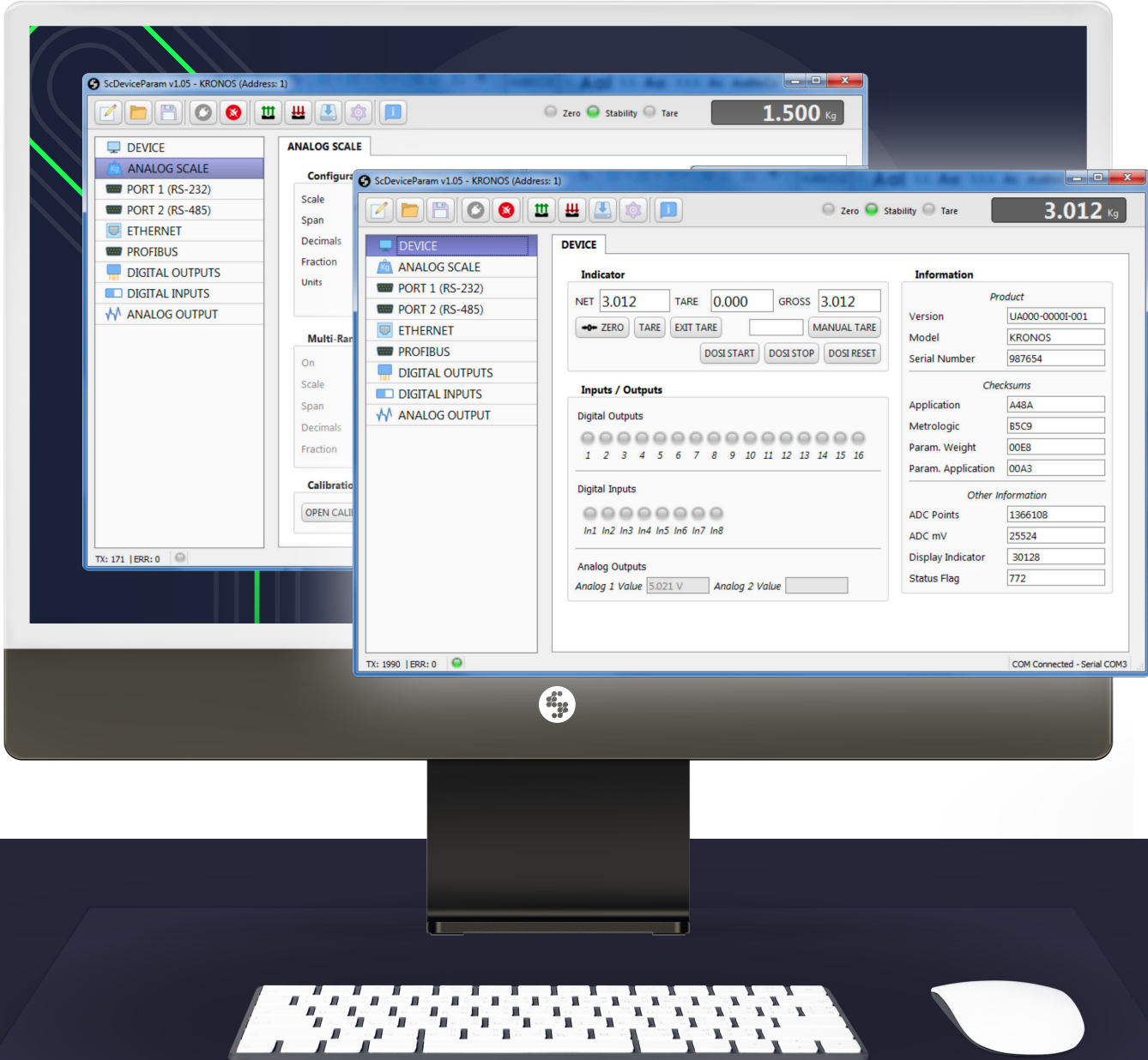
The main basic PLC functionalities available are:

- Activate or deactivate outputs (relays)
- Use of equipment flags (stability, zero, ..)
- Timers and counters
- Comparison operations



Create your own small automation applications





SENSOPARAMS

Parameterization of the equipment by PC application in a visual environment reduces setting and calibration times



SENSOCAR

We put the heart in weighing

sensocar.com
comercial@sensocar.com

+34 93 780 44 99